



MIGRATION GOVERNANCE FOR SUSTAINABLE DEVELOPMENT IN INDONESIA



BACKGROUND

The Global Compact for Safe, Orderly, and Regular Migration (GCM) is a non-binding agreement adopted by the UN in 2018, aiming to improve international cooperation on migration governance, while respecting human rights and state sovereignty.

With over 5 million Indonesian migrant workers abroad and \$14 billion in remittances (1.1% of Indonesia's GDP) in 2024 sustaining families, communities, and the economy, effective migration management is essential and involves a whole-of-government and whole-of-society approach. As a key origin, transit, and destination country for migration, fostering coherence and common approaches in migration governance is key. Being a GCM Champion Country, Indonesia has also been at the forefront of advancing migrant worker protection.

The Joint Programme "Migration Governance for Sustainable Development in Indonesia," funded by the Migration Multi-Partner Trust Fund and implemented by IOM, UNDP, and UN Women, under the coordination of the UN Resident Coordinator's Office in Indonesia provided continued support to the Government of Indonesia in implementing its priorities under the GCM. Guided by the core principles of the GCM, the programme aimed to enhance migration governance at both national and local levels.

SDGs TARGET:



Global Compact
for Migration

MAIN OBJECTIVE

Supporting the Government of Indonesia in enhancing migration governance at the national and local levels, and integrating the GCM into Indonesia's National Action Plan, based on data and appropriate gender responsive measures.

TARGET AREA



THE PROGRAMME AT A GLANCE



DURATION

16 December 2021 -
30 September 2024
(33 months)



BUDGET

USD 1,700,000



DONOR



Migration
Multi-Partner
Trust Fund



UNITED NATIONS ORGANIZATIONS



IMPLEMENTING PARTNERS



MINISTRY OF FOREIGN AFFAIRS
REPUBLIC OF INDONESIA



KEMENTERIAN
PERBERDAYAAN PEREMPUAN DAN PERLINDUNGAN ANAK
REPUBLIK INDONESIA



KEMENTERIAN
HAK ASASI MANUSIA
REPUBLIK INDONESIA



KEMENTERIAN
INVESTASI DAN PERENCANAAN
REPUBLIK INDONESIA



KEMENTERIAN
PELINDUNGAN PEKERJA MIGRAN
INDONESIA/BADAN
PELINDUNGAN PEKERJA
MIGRAN INDONESIA



BADAN PUSAT STATISTIK

NATIONAL COMMISSION ON
VIOLENCE AGAINST WOMEN
KOMISI NASIONAL ANTI KEKERASAN TERHADAP PEREMPUAN

KOMNAS PEREMPUAN



PUSAT
INVESTASI
PEMERINTAH



Dinas Tenaga Kerja
Dan Transmigrasi
Provinsi Jawa Tengah



LBH-APIK
NUSA TENGGARA BARAT



Legal Resource Center
untuk Keadilan Gender
dan Hak Asasi Manusia



RUMAH
PEREMPUAN
MIGRAN



KEMENTERIAN
KEMERDEKAAN



SBMI



SEMUT
NUSANTARA





KEY RESULTS

GCM Cluster 1: Ensuring that migration is voluntary, orderly and regular.



Preventing gender-based violence and trafficking-in-persons

The **Safe Travel App** by the Ministry of Foreign Affairs provides practical travel information for Indonesian citizens abroad. The programme integrated the **Sahabat Artifisial Migran Indonesia (SARI) AI Chatbot** that allows users, particularly women migrant workers who are victims of gender-based violence and trafficking, to obtain information, engage in dialogue, and seek help without fear of stigma and condemnation.



Advocacy and public awareness

> 350 university students

received public awareness workshop on **online scams** and the GCM



Integrating migration into national and local policy planning

> 50 government institutions,
17 NGOs, and academics

engaged to promote broader public engagement with the GCM National Action Plan



180 participants from
95 government institutions,
17 NGOs, academia,
and development partners

equipped with understanding on how to **integrate migration into their local policy planning** and SDGs implementation



GCM Cluster 2: Protecting migrants through rights-based border governance measures

Capacity building

375 consular and frontline officer from **59** Indonesian embassies and government institutions

increased their knowledge to provide rights-based and victim-centered services, with **191** participants who received training demonstrating significant improvement in their understanding.



GCM Cluster 3: Supporting the integration of migrants and their contribution to development



Migration benefits for local development

> 330 local government officials, NGO staff and academicians

equipped with knowledge and tools to integrate migration into local policy development and budget planning across the three target area.



Publication

Innovative Financing Feasibility Study Report

Explores different innovative financing strategies from the public and private sectors to address the various financing challenges faced by migrants at all stages of migration.





Economic empowerment for migrant workers and their families

Semarang Central Java

67 beneficiaries

benefitted from village-owned companies established in

3 villages

with increase revenue from product sales and tourism

Maros South Sulawesi

IDR 10 million

increase in revenue for SBMI Cooperative Mart, empowering

> 110 migrant worker returnees from 5 villages

West & Central Lombok West Nusa Tenggara

50 - 75% revenue increase

reported by 54 beneficiaries who received training and funding from MSME Business Incubation

102 participants

received financial literacy and management skills with the JUANG Financial Literacy App

Empowering women migrant workers and promoting positive gender norms

223 prospective and returning women migrant workers

trained on financial literacy, entrepreneurship, collective parenting and gender equality in household.

139 male partners and family members

trained on equal gender relations in the household.



GCM Cluster 4: Improving value-driven and evidence-based policymaking and public debate and enhancing cooperation on migration

Publications

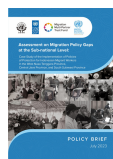


Migration Governance Indicators

Identifies good practices and areas for further development for migration policies at the national and local level

Policy Briefs of Assessment on Migration Policy Gaps at the Sub-national Level

Explores the implementation of Law No. 18 of 2017 on the Protection of Indonesian Migrant Workers at the sub-national level and provides recommendations for further action



National Secondary Data Review

Identifies available thematic migration data sources and data gap at the country level and reviews them against the Sustainable Development Goals (SDGs) and GCM

Policy Brief:

Ending Barriers for Women Migrant Worker Victims of Violence in Accessing Justice and Recovery

Explores the high rate of gender-based violence against Indonesian women migrant workers, access to justice, and the urgency for an Integrated Criminal Justice System, particularly for Central Java and West Nusa Tenggara Province



Capacity building

47 government officials

trained on different thematic migration areas and how to build a whole-of-government approach in migration management

Strengthening migration policy

29 ministries/agencies and **79** local government units

established an interministerial coordination mechanism to review and discuss policy coherence across over

52 policies

103 participants

from governmental and non-governmental institutions

successfully identified key policy and best practices to strengthen the protection of Indonesian migrant fishing and commercial vessel crews

3 Focus Group Discussions

conducted to support the integration of migration and GCM indicators into the National Medium-Term Development Plan (RPJMN) for 2025 - 2029

12 ministries/agencies, **4** UN agencies, **1** NGO

engaged in strengthening the coordination mechanism for One Data International Migration (SDMI) Indonesia, which aims to improve the governance of international migration data and contribute to evidence-based migration policy